



ANALYTICAL REPORT

Apex Laboratories, LLC
6700 S.W. Sandburg Street
Tigard, OR 97223
503-718-2323
ORELAP ID: OR100062

Thursday, April 25, 2024
Kennedy Potts
PBS Engineering and Environmental (Eugene)
3500 Chad Dr. Suite 100
Eugene, OR 97408

RE: A4D1230 - Twin Rivers Charter School - 52816.000

Thank you for using Apex Laboratories. We greatly appreciate your business and strive to provide the highest quality services to the environmental industry.

Enclosed are the results of analyses for work order A4D1230, which was received by the laboratory on 4/12/2024 at 10:18:00AM.

If you have any questions concerning this report or the services we offer, please feel free to contact me by email at: jwoodcock@apex-labs.com, or by phone at 503-718-2323.

Please note: All samples will be disposed of within 30 days of sample receipt, unless prior arrangements have been made.

Cooler Receipt Information
Acceptable Receipt Temperature is less than, or equal to, 6 degC (not frozen), or received on ice the same day as sampling.
(See Cooler Receipt Form for details)
Default Cooler 17.3 degC

This Final Report is the official version of the data results for this sample submission, unless superseded by a subsequent, labeled amended report. All other deliverables derived from this data, including Electronic Data Deliverables (EDDs), CLP-like forms, client requested summary sheets, and all other products are considered secondary to this report.



Apex Laboratories

Handwritten signature of Jason Woodcock

The results in this report apply to the samples analyzed in accordance with the chain of custody document(s) and updated by any subsequent written communications. This analytical report must be reproduced in its entirety.

Jason Woodcock, Project Manager



ANALYTICAL REPORT

**Apex Laboratories, LLC**

6700 S.W. Sandburg Street  
Tigard, OR 97223  
503-718-2323  
ORELAP ID: OR100062

<b>PBS Engineering and Environmental (Eugene)</b> 3500 Chad Dr. Suite 100 Eugene, OR 97408	Project: <b>Twin Rivers Charter School</b> Project Number: 52816.000 Project Manager: Kennedy Potts	<b>Report ID:</b> A4D1230 - 04 25 24 1521
--	---	--

**ANALYTICAL REPORT FOR SAMPLES**

**SAMPLE INFORMATION**

Client Sample ID	Laboratory ID	Matrix	Date Sampled	Date Received
20823000-006CF24A	A4D1230-01	Drinking Water	04/10/24 00:00	04/12/24 10:18
20823000-005DW24A	A4D1230-02	Drinking Water	04/10/24 00:00	04/12/24 10:18
20823000-003BF24A	A4D1230-03	Drinking Water	04/10/24 00:00	04/12/24 10:18
20823000-004BF24A	A4D1230-04	Drinking Water	04/10/24 00:00	04/12/24 10:18
20823000-001BF24A	A4D1230-05	Drinking Water	04/10/24 00:00	04/12/24 10:18
20823000-002BF24A	A4D1230-06	Drinking Water	04/10/24 00:00	04/12/24 10:18
20823000-009DW24A	A4D1230-07	Drinking Water	04/10/24 00:00	04/12/24 10:18
20823000-011KF24A	A4D1230-08	Drinking Water	04/10/24 00:00	04/12/24 10:18
20823000-010OT24A	A4D1230-09	Drinking Water	04/10/24 00:00	04/12/24 10:18
20823000-028KF24A	A4D1230-10	Drinking Water	04/10/24 00:00	04/12/24 10:18
20823000-012BF24A	A4D1230-11	Drinking Water	04/10/24 00:00	04/12/24 10:18
20823000-027SF24A	A4D1230-12	Drinking Water	04/10/24 00:00	04/12/24 10:18
20823000-025BF24A	A4D1230-13	Drinking Water	04/10/24 00:00	04/12/24 10:18
20823000-013BF24A	A4D1230-14	Drinking Water	04/10/24 00:00	04/12/24 10:18
20823000-018BF24A	A4D1230-15	Drinking Water	04/10/24 00:00	04/12/24 10:18
20823000-019BF24A	A4D1230-16	Drinking Water	04/10/24 00:00	04/12/24 10:18
20823000-020BF24A	A4D1230-17	Drinking Water	04/10/24 00:00	04/12/24 10:18
20823000-017DW24A	A4D1230-18	Drinking Water	04/10/24 00:00	04/12/24 10:18
20823000-031WB24A	A4D1230-19	Drinking Water	04/10/24 00:00	04/12/24 10:18
20823000-014BF24A	A4D1230-20	Drinking Water	04/10/24 00:00	04/12/24 10:18
20823000-015BF24A	A4D1230-21	Drinking Water	04/10/24 00:00	04/12/24 10:18
20823000-016BF24A	A4D1230-22	Drinking Water	04/10/24 00:00	04/12/24 10:18
20823000-021SF24A	A4D1230-23	Drinking Water	04/10/24 00:00	04/12/24 10:18
20823000-023SF24A	A4D1230-24	Drinking Water	04/10/24 00:00	04/12/24 10:18
20823000-022SF24A	A4D1230-25	Drinking Water	04/10/24 00:00	04/12/24 10:18
20823000-024OT24A	A4D1230-26	Drinking Water	04/10/24 00:00	04/12/24 10:18
20823000-026OT24A	A4D1230-27	Drinking Water	04/10/24 00:00	04/12/24 10:18
20823000-032OT24A	A4D1230-28	Drinking Water	04/10/24 00:00	04/12/24 10:18
20823000-007OT24A	A4D1230-29	Drinking Water	04/10/24 00:00	04/12/24 10:18

Apex Laboratories

*The results in this report apply to the samples analyzed in accordance with the chain of custody document(s) and updated by any subsequent written communications. This analytical report must be reproduced in its entirety.*



ANALYTICAL REPORT

**Apex Laboratories, LLC**

6700 S.W. Sandburg Street  
Tigard, OR 97223  
503-718-2323  
ORELAP ID: OR100062

<b>PBS Engineering and Environmental (Eugene)</b> 3500 Chad Dr. Suite 100 Eugene, OR 97408	Project: <b>Twin Rivers Charter School</b> Project Number: <b>52816.000</b> Project Manager: <b>Kennedy Potts</b>	<b>Report ID:</b> <b>A4D1230 - 04 25 24 1521</b>
--	---	---

**ANALYTICAL SAMPLE RESULTS**

**Total Metals in Drinking Water by EPA 200.8 (ICPMS)**

Analyte	Sample Result	Detection Limit	Reporting Limit	Units	Dilution	Date Analyzed	Method Ref.	Notes
<b>Matrix: Drinking Water</b>								
<u>Batch: 24D0715</u>								
<b>Lead</b>	<b>113</b>	---	0.200	ug/L	1	04/18/24 20:37	EPA 200.8	<b>DW-D</b>
<b>Matrix: Drinking Water</b>								
<u>Batch: 24D0564</u>								
<b>Lead</b>	<b>1.96</b>	---	0.200	ug/L	1	04/19/24 10:48	EPA 200.8	
<b>Matrix: Drinking Water</b>								
<u>Batch: 24D0564</u>								
<b>Lead</b>	<b>4.62</b>	---	0.200	ug/L	1	04/19/24 10:56	EPA 200.8	
<b>Matrix: Drinking Water</b>								
<u>Batch: 24D0564</u>								
<b>Lead</b>	<b>6.21</b>	---	0.200	ug/L	1	04/19/24 10:58	EPA 200.8	
<b>Matrix: Drinking Water</b>								
<u>Batch: 24D0564</u>								
<b>Lead</b>	<b>10.2</b>	---	0.200	ug/L	1	04/19/24 11:00	EPA 200.8	
<b>Matrix: Drinking Water</b>								
<u>Batch: 24D0564</u>								
<b>Lead</b>	<b>5.91</b>	---	0.200	ug/L	1	04/19/24 11:01	EPA 200.8	
<b>Matrix: Drinking Water</b>								
<u>Batch: 24D0564</u>								
<b>Lead</b>	<b>33.8</b>	---	0.200	ug/L	1	04/19/24 11:03	EPA 200.8	
<b>Matrix: Drinking Water</b>								
<u>Batch: 24D0564</u>								
<b>Lead</b>	<b>5.07</b>	---	0.200	ug/L	1	04/19/24 11:05	EPA 200.8	
<b>Matrix: Drinking Water</b>								
<u>Batch: 24D0564</u>								
<b>Lead</b>	<b>1.82</b>	---	0.200	ug/L	1	04/19/24 11:06	EPA 200.8	

Apex Laboratories

*The results in this report apply to the samples analyzed in accordance with the chain of custody document(s) and updated by any subsequent written communications. This analytical report must be reproduced in its entirety.*

Jason Woodcock, Project Manager



ANALYTICAL REPORT

**Apex Laboratories, LLC**

6700 S.W. Sandburg Street  
Tigard, OR 97223  
503-718-2323  
ORELAP ID: OR100062

<b>PBS Engineering and Environmental (Eugene)</b> 3500 Chad Dr. Suite 100 Eugene, OR 97408	Project: <b>Twin Rivers Charter School</b> Project Number: <b>52816.000</b> Project Manager: <b>Kennedy Potts</b>	<b>Report ID:</b> <b>A4D1230 - 04 25 24 1521</b>
--	---	---

**ANALYTICAL SAMPLE RESULTS**

**Total Metals in Drinking Water by EPA 200.8 (ICPMS)**

Analyte	Sample Result	Detection Limit	Reporting Limit	Units	Dilution	Date Analyzed	Method Ref.	Notes
<b>20823000-028KF24A (A4D1230-10) Matrix: Drinking Water</b>								
<u>Batch: 24D0564</u>								
Lead	1.67	---	0.200	ug/L	1	04/19/24 11:08	EPA 200.8	
<b>20823000-012BF24A (A4D1230-11) Matrix: Drinking Water</b>								
<u>Batch: 24D0564</u>								
Lead	7.85	---	0.200	ug/L	1	04/19/24 11:10	EPA 200.8	
<b>20823000-027SF24A (A4D1230-12) Matrix: Drinking Water</b>								
<u>Batch: 24D0564</u>								
Lead	1.76	---	0.200	ug/L	1	04/19/24 11:11	EPA 200.8	
<b>20823000-025BF24A (A4D1230-13) Matrix: Drinking Water</b>								
<u>Batch: 24D0564</u>								
Lead	1.67	---	0.200	ug/L	1	04/19/24 11:17	EPA 200.8	
<b>20823000-013BF24A (A4D1230-14) Matrix: Drinking Water</b>								
<u>Batch: 24D0564</u>								
Lead	1.20	---	0.200	ug/L	1	04/19/24 11:18	EPA 200.8	
<b>20823000-018BF24A (A4D1230-15) Matrix: Drinking Water</b>								
<u>Batch: 24D0564</u>								
Lead	0.438	---	0.200	ug/L	1	04/19/24 11:20	EPA 200.8	
<b>20823000-019BF24A (A4D1230-16) Matrix: Drinking Water</b>								
<u>Batch: 24D0564</u>								
Lead	0.946	---	0.200	ug/L	1	04/19/24 11:22	EPA 200.8	
<b>20823000-020BF24A (A4D1230-17) Matrix: Drinking Water</b>								
<u>Batch: 24D0564</u>								
Lead	7.88	---	0.200	ug/L	1	04/19/24 11:23	EPA 200.8	
<b>20823000-017DW24A (A4D1230-18) Matrix: Drinking Water</b>								
<u>Batch: 24D0564</u>								
Lead	0.272	---	0.200	ug/L	1	04/19/24 11:25	EPA 200.8	

Apex Laboratories

*The results in this report apply to the samples analyzed in accordance with the chain of custody document(s) and updated by any subsequent written communications. This analytical report must be reproduced in its entirety.*

Jason Woodcock, Project Manager



ANALYTICAL REPORT

**Apex Laboratories, LLC**

6700 S.W. Sandburg Street  
Tigard, OR 97223  
503-718-2323  
ORELAP ID: OR100062

<b>PBS Engineering and Environmental (Eugene)</b> 3500 Chad Dr. Suite 100 Eugene, OR 97408	Project: <b>Twin Rivers Charter School</b> Project Number: <b>52816.000</b> Project Manager: <b>Kennedy Potts</b>	<b>Report ID:</b> <b>A4D1230 - 04 25 24 1521</b>
--	---	---

**ANALYTICAL SAMPLE RESULTS**

**Total Metals in Drinking Water by EPA 200.8 (ICPMS)**

Analyte	Sample Result	Detection Limit	Reporting Limit	Units	Dilution	Date Analyzed	Method Ref.	Notes
<b>20823000-031WB24A (A4D1230-19)</b>				<b>Matrix: Drinking Water</b>				
<u>Batch: 24D0564</u>								
Lead	0.248	---	0.200	ug/L	1	04/19/24 11:27	EPA 200.8	
<b>20823000-014BF24A (A4D1230-20)</b>				<b>Matrix: Drinking Water</b>				
<u>Batch: 24D0564</u>								
Lead	0.564	---	0.200	ug/L	1	04/19/24 11:29	EPA 200.8	
<b>20823000-015BF24A (A4D1230-21)</b>				<b>Matrix: Drinking Water</b>				
<u>Batch: 24D0564</u>								
Lead	ND	---	0.200	ug/L	1	04/19/24 11:30	EPA 200.8	
<b>20823000-016BF24A (A4D1230-22)</b>				<b>Matrix: Drinking Water</b>				
<u>Batch: 24D0583</u>								
Lead	0.869	---	0.200	ug/L	1	04/23/24 10:02	EPA 200.8	
<b>20823000-021SF24A (A4D1230-23)</b>				<b>Matrix: Drinking Water</b>				
<u>Batch: 24D0583</u>								
Lead	41.8	---	0.200	ug/L	1	04/23/24 10:07	EPA 200.8	
<b>20823000-023SF24A (A4D1230-24)</b>				<b>Matrix: Drinking Water</b>				
<u>Batch: 24D0583</u>								
Lead	3.07	---	0.200	ug/L	1	04/23/24 10:09	EPA 200.8	
<b>20823000-022SF24A (A4D1230-25)</b>				<b>Matrix: Drinking Water</b>				
<u>Batch: 24D0715</u>								
Lead	6.04	---	0.200	ug/L	1	04/18/24 20:49	EPA 200.8	DW-D
<b>20823000-024OT24A (A4D1230-26)</b>				<b>Matrix: Drinking Water</b>				
<u>Batch: 24D0715</u>								
Lead	3.95	---	0.200	ug/L	1	04/18/24 21:01	EPA 200.8	DW-D
<b>20823000-026OT24A (A4D1230-27)</b>				<b>Matrix: Drinking Water</b>				
<u>Batch: 24D0583</u>								
Lead	11.3	---	0.200	ug/L	1	04/23/24 10:11	EPA 200.8	

Apex Laboratories

The results in this report apply to the samples analyzed in accordance with the chain of custody document(s) and updated by any subsequent written communications. This analytical report must be reproduced in its entirety.

Jason Woodcock, Project Manager



ANALYTICAL REPORT

**Apex Laboratories, LLC**

6700 S.W. Sandburg Street  
Tigard, OR 97223  
503-718-2323  
ORELAP ID: OR100062

<b>PBS Engineering and Environmental (Eugene)</b> 3500 Chad Dr. Suite 100 Eugene, OR 97408	Project: <b>Twin Rivers Charter School</b> Project Number: <b>52816.000</b> Project Manager: <b>Kennedy Potts</b>	<b>Report ID:</b> <b>A4D1230 - 04 25 24 1521</b>
--	---	---

**ANALYTICAL SAMPLE RESULTS**

**Total Metals in Drinking Water by EPA 200.8 (ICPMS)**

Analyte	Sample Result	Detection Limit	Reporting Limit	Units	Dilution	Date Analyzed	Method Ref.	Notes
<b>20823000-032OT24A (A4D1230-28)</b>				<b>Matrix: Drinking Water</b>				
<u>Batch: 24D0715</u>								
<b>Lead</b>	<b>8.33</b>	---	0.200	ug/L	1	04/18/24 21:13	EPA 200.8	<b>DW-D</b>
<b>20823000-007OT24A (A4D1230-29RE1)</b>				<b>Matrix: Drinking Water</b>				
<u>Batch: 24D0583</u>								
<b>Lead</b>	<b>179</b>	---	2.00	ug/L	10	04/23/24 12:15	EPA 200.8	

Apex Laboratories

*The results in this report apply to the samples analyzed in accordance with the chain of custody document(s) and updated by any subsequent written communications. This analytical report must be reproduced in its entirety.*

Jason Woodcock, Project Manager



ANALYTICAL REPORT

**Apex Laboratories, LLC**

6700 S.W. Sandburg Street  
Tigard, OR 97223  
503-718-2323  
ORELAP ID: OR100062

<b>PBS Engineering and Environmental (Eugene)</b>	Project: <b>Twin Rivers Charter School</b>	
3500 Chad Dr. Suite 100	Project Number: <b>52816.000</b>	<b>Report ID:</b>
Eugene, OR 97408	Project Manager: <b>Kennedy Potts</b>	<b>A4D1230 - 04 25 24 1521</b>

**QUALITY CONTROL (QC) SAMPLE RESULTS**

**Total Metals in Drinking Water by EPA 200.8 (ICPMS)**

Analyte	Result	Detection Limit	Reporting Limit	Units	Dilution	Spike Amount	Source Result	% REC	% REC Limits	RPD	RPD Limit	Notes
<b>Batch 24D0564 - EPA 200.8 Direct Analysis</b>						<b>Drinking Water</b>						
<b>Blank (24D0564-BLK1)</b>		Prepared: 04/16/24 08:13		Analyzed: 04/19/24 10:44								
<u>EPA 200.8</u>												
Lead	ND	---	0.200	ug/L	1	---	---	---	---	---	---	
<b>LCS (24D0564-BS1)</b>		Prepared: 04/16/24 08:13		Analyzed: 04/19/24 10:46								
<u>EPA 200.8</u>												
Lead	14.4	---	0.201	ug/L	1	15.0	---	96	85 - 115%	---	---	
<b>Duplicate (24D0564-DUP1)</b>		Prepared: 04/16/24 08:13		Analyzed: 04/19/24 10:49								
<u>QC Source Sample: 20823000-005DW24A (A4D1230-02)</u>												
<u>EPA 200.8</u>												
Lead	1.94	---	0.200	ug/L	1	---	1.96	---	---	0.8	20%	
<b>Matrix Spike (24D0564-MS1)</b>		Prepared: 04/16/24 08:13		Analyzed: 04/19/24 10:51								
<u>QC Source Sample: 20823000-005DW24A (A4D1230-02)</u>												
<u>EPA 200.8</u>												
Lead	16.1	---	0.201	ug/L	1	15.0	1.96	94	70 - 130%	---	---	
<b>Matrix Spike (24D0564-MS2)</b>		Prepared: 04/16/24 08:13		Analyzed: 04/19/24 11:32								
<u>QC Source Sample: 20823000-015BF24A (A4D1230-21)</u>												
<u>EPA 200.8</u>												
Lead	14.3	---	0.201	ug/L	1	15.0	0.187	94	70 - 130%	---	---	
<b>Batch 24D0583 - EPA 200.8 Direct Analysis</b>						<b>Drinking Water</b>						
<b>Blank (24D0583-BLK1)</b>		Prepared: 04/16/24 11:37		Analyzed: 04/23/24 09:59								
<u>EPA 200.8</u>												
Lead	ND	---	0.200	ug/L	1	---	---	---	---	---	---	
<b>LCS (24D0583-BS1)</b>		Prepared: 04/16/24 11:37		Analyzed: 04/23/24 10:01								
<u>EPA 200.8</u>												
Lead	14.4	---	0.201	ug/L	1	15.0	---	96	85 - 115%	---	---	
<b>Duplicate (24D0583-DUP1)</b>		Prepared: 04/16/24 11:37		Analyzed: 04/23/24 10:04								
<u>QC Source Sample: 20823000-016BF24A (A4D1230-22)</u>												

Apex Laboratories

The results in this report apply to the samples analyzed in accordance with the chain of custody document(s) and updated by any subsequent written communications. This analytical report must be reproduced in its entirety.

Jason Woodcock, Project Manager



ANALYTICAL REPORT

**Apex Laboratories, LLC**

6700 S.W. Sandburg Street  
Tigard, OR 97223  
503-718-2323  
ORELAP ID: OR100062

<b>PBS Engineering and Environmental (Eugene)</b> 3500 Chad Dr. Suite 100 Eugene, OR 97408	Project: <b>Twin Rivers Charter School</b> Project Number: <b>52816.000</b> Project Manager: <b>Kennedy Potts</b>	<b>Report ID:</b> <b>A4D1230 - 04 25 24 1521</b>
--	---	---

**QUALITY CONTROL (QC) SAMPLE RESULTS**

**Total Metals in Drinking Water by EPA 200.8 (ICPMS)**

Analyte	Result	Detection Limit	Reporting Limit	Units	Dilution	Spike Amount	Source Result	% REC	% REC Limits	RPD	RPD Limit	Notes
<b>Batch 24D0583 - EPA 200.8 Direct Analysis</b>						<b>Drinking Water</b>						
<b>Duplicate (24D0583-DUP1)</b>		Prepared: 04/16/24 11:37 Analyzed: 04/23/24 10:04										
<u>QC Source Sample: 20823000-016BF24A (A4D1230-22)</u>												
<u>EPA 200.8</u>												
Lead	0.890	---	0.200	ug/L	1	---	0.869	---	---	2	20%	
<b>Matrix Spike (24D0583-MS1)</b>						Prepared: 04/16/24 11:37 Analyzed: 04/23/24 10:06						
<u>QC Source Sample: 20823000-016BF24A (A4D1230-22)</u>												
<u>EPA 200.8</u>												
Lead	15.2	---	0.201	ug/L	1	15.0	0.869	95	70 - 130%	---	---	

Apex Laboratories

The results in this report apply to the samples analyzed in accordance with the chain of custody document(s) and updated by any subsequent written communications. This analytical report must be reproduced in its entirety.

Jason Woodcock, Project Manager



ANALYTICAL REPORT

**Apex Laboratories, LLC**

6700 S.W. Sandburg Street  
Tigard, OR 97223  
503-718-2323  
ORELAP ID: OR100062

<b>PBS Engineering and Environmental (Eugene)</b> 3500 Chad Dr. Suite 100 Eugene, OR 97408	Project: <b>Twin Rivers Charter School</b> Project Number: <b>52816.000</b> Project Manager: <b>Kennedy Potts</b>	<b>Report ID:</b> <b>A4D1230 - 04 25 24 1521</b>
--	---	---

**QUALITY CONTROL (QC) SAMPLE RESULTS**

**Total Metals in Drinking Water by EPA 200.8 (ICPMS)**

Analyte	Result	Detection Limit	Reporting Limit	Units	Dilution	Spike Amount	Source Result	% REC	% REC Limits	RPD	RPD Limit	Notes
<b>Batch 24D0715 - EPA 3015A</b>						<b>Drinking Water</b>						
<b>Blank (24D0715-BLK1)</b>		Prepared: 04/18/24 13:52 Analyzed: 04/18/24 20:13										
<u>EPA 200.8</u>												
Lead	ND	---	0.200	ug/L	1	---	---	---	---	---	---	---
<b>LCS (24D0715-BS1)</b>		Prepared: 04/18/24 13:52 Analyzed: 04/18/24 20:19										
<u>EPA 200.8</u>												
Lead	17.0	---	0.200	ug/L	1	16.7	---	102	85 - 115%	---	---	---
<b>Duplicate (24D0715-DUP1)</b>		Prepared: 04/18/24 13:52 Analyzed: 04/18/24 20:43										
<u>QC Source Sample: 20823000-006CF24A (A4D1230-01)</u>												
<u>EPA 200.8</u>												
Lead	112	---	0.200	ug/L	1	---	113	---	---	0.3	20%	DW-D
<b>Matrix Spike (24D0715-MS1)</b>		Prepared: 04/18/24 13:52 Analyzed: 04/18/24 20:55										
<u>QC Source Sample: 20823000-022SF24A (A4D1230-25)</u>												
<u>EPA 200.8</u>												
Lead	24.9	---	0.200	ug/L	1	16.7	6.04	113	70 - 130%	---	---	DW-D
<b>Matrix Spike (24D0715-MS2)</b>		Prepared: 04/18/24 13:52 Analyzed: 04/18/24 21:07										
<u>QC Source Sample: 20823000-024OT24A (A4D1230-26)</u>												
<u>EPA 200.8</u>												
Lead	20.7	---	0.200	ug/L	1	16.7	3.95	100	70 - 130%	---	---	DW-D

Apex Laboratories

The results in this report apply to the samples analyzed in accordance with the chain of custody document(s) and updated by any subsequent written communications. This analytical report must be reproduced in its entirety.

Jason Woodcock, Project Manager



**ANALYTICAL REPORT**

**Apex Laboratories, LLC**

6700 S.W. Sandburg Street  
Tigard, OR 97223  
503-718-2323

ORELAP ID: OR100062

<b>PBS Engineering and Environmental (Eugene)</b> 3500 Chad Dr. Suite 100 Eugene, OR 97408	Project: <b>Twin Rivers Charter School</b> Project Number: <b>52816.000</b> Project Manager: <b>Kennedy Potts</b>	Report ID: <b>A4D1230 - 04 25 24 1521</b>
--	---	--

**SAMPLE PREPARATION INFORMATION**

**Total Metals in Drinking Water by EPA 200.8 (ICPMS)**

**Prep: EPA 200.8 Direct Analysis**

Lab Number	Matrix	Method	Sampled	Prepared	Sample Initial/Final	Default Initial/Final	RL Prep Factor
<u>Batch: 24D0564</u>							
A4D1230-02	Drinking Water	EPA 200.8	04/10/24 00:00	04/16/24 08:13	10mL/10mL	10mL/10mL	1.00
A4D1230-03	Drinking Water	EPA 200.8	04/10/24 00:00	04/16/24 08:13	10mL/10mL	10mL/10mL	1.00
A4D1230-04	Drinking Water	EPA 200.8	04/10/24 00:00	04/16/24 08:13	10mL/10mL	10mL/10mL	1.00
A4D1230-05	Drinking Water	EPA 200.8	04/10/24 00:00	04/16/24 08:13	10mL/10mL	10mL/10mL	1.00
A4D1230-06	Drinking Water	EPA 200.8	04/10/24 00:00	04/16/24 08:13	10mL/10mL	10mL/10mL	1.00
A4D1230-07	Drinking Water	EPA 200.8	04/10/24 00:00	04/16/24 08:13	10mL/10mL	10mL/10mL	1.00
A4D1230-08	Drinking Water	EPA 200.8	04/10/24 00:00	04/16/24 08:13	10mL/10mL	10mL/10mL	1.00
A4D1230-09	Drinking Water	EPA 200.8	04/10/24 00:00	04/16/24 08:13	10mL/10mL	10mL/10mL	1.00
A4D1230-10	Drinking Water	EPA 200.8	04/10/24 00:00	04/16/24 08:13	10mL/10mL	10mL/10mL	1.00
A4D1230-11	Drinking Water	EPA 200.8	04/10/24 00:00	04/16/24 08:13	10mL/10mL	10mL/10mL	1.00
A4D1230-12	Drinking Water	EPA 200.8	04/10/24 00:00	04/16/24 08:13	10mL/10mL	10mL/10mL	1.00
A4D1230-13	Drinking Water	EPA 200.8	04/10/24 00:00	04/16/24 08:13	10mL/10mL	10mL/10mL	1.00
A4D1230-14	Drinking Water	EPA 200.8	04/10/24 00:00	04/16/24 08:13	10mL/10mL	10mL/10mL	1.00
A4D1230-15	Drinking Water	EPA 200.8	04/10/24 00:00	04/16/24 08:13	10mL/10mL	10mL/10mL	1.00
A4D1230-16	Drinking Water	EPA 200.8	04/10/24 00:00	04/16/24 08:13	10mL/10mL	10mL/10mL	1.00
A4D1230-17	Drinking Water	EPA 200.8	04/10/24 00:00	04/16/24 08:13	10mL/10mL	10mL/10mL	1.00
A4D1230-18	Drinking Water	EPA 200.8	04/10/24 00:00	04/16/24 08:13	10mL/10mL	10mL/10mL	1.00
A4D1230-19	Drinking Water	EPA 200.8	04/10/24 00:00	04/16/24 08:13	10mL/10mL	10mL/10mL	1.00
A4D1230-20	Drinking Water	EPA 200.8	04/10/24 00:00	04/16/24 08:13	10mL/10mL	10mL/10mL	1.00
A4D1230-21	Drinking Water	EPA 200.8	04/10/24 00:00	04/16/24 08:13	10mL/10mL	10mL/10mL	1.00
<u>Batch: 24D0583</u>							
A4D1230-22	Drinking Water	EPA 200.8	04/10/24 00:00	04/16/24 11:37	10mL/10mL	10mL/10mL	1.00
A4D1230-23	Drinking Water	EPA 200.8	04/10/24 00:00	04/16/24 11:37	10mL/10mL	10mL/10mL	1.00
A4D1230-24	Drinking Water	EPA 200.8	04/10/24 00:00	04/16/24 11:37	10mL/10mL	10mL/10mL	1.00
A4D1230-27	Drinking Water	EPA 200.8	04/10/24 00:00	04/16/24 11:37	10mL/10mL	10mL/10mL	1.00
A4D1230-29RE1	Drinking Water	EPA 200.8	04/10/24 00:00	04/16/24 11:37	10mL/10mL	10mL/10mL	1.00

**Prep: EPA 3015A**

Lab Number	Matrix	Method	Sampled	Prepared	Sample Initial/Final	Default Initial/Final	RL Prep Factor
<u>Batch: 24D0715</u>							
A4D1230-01	Drinking Water	EPA 200.8	04/10/24 00:00	04/18/24 13:52	45mL/50mL	45mL/50mL	1.00
A4D1230-25	Drinking Water	EPA 200.8	04/10/24 00:00	04/18/24 13:52	45mL/50mL	45mL/50mL	1.00
A4D1230-26	Drinking Water	EPA 200.8	04/10/24 00:00	04/18/24 13:52	45mL/50mL	45mL/50mL	1.00
A4D1230-28	Drinking Water	EPA 200.8	04/10/24 00:00	04/18/24 13:52	45mL/50mL	45mL/50mL	1.00

Apex Laboratories

*The results in this report apply to the samples analyzed in accordance with the chain of custody document(s) and updated by any subsequent written communications. This analytical report must be reproduced in its entirety.*

Jason Woodcock, Project Manager



**ANALYTICAL REPORT**

**Apex Laboratories, LLC**

6700 S.W. Sandburg Street  
Tigard, OR 97223  
503-718-2323  
ORELAP ID: OR100062

<b><u>PBS Engineering and Environmental (Eugene)</u></b>	Project: <b><u>Twin Rivers Charter School</u></b>	<b><u>Report ID:</u></b>
3500 Chad Dr. Suite 100	Project Number: <b>52816.000</b>	<b>A4D1230 - 04 25 24 1521</b>
Eugene, OR 97408	Project Manager: <b>Kennedy Potts</b>	

**QUALIFIER DEFINITIONS**

**Client Sample and Quality Control (QC) Sample Qualifier Definitions:**

**Apex Laboratories**

**DW-D** Turbidity greater than 1 NTU. Sample was digested per EPA Method 200.8.

Apex Laboratories

*The results in this report apply to the samples analyzed in accordance with the chain of custody document(s) and updated by any subsequent written communications. This analytical report must be reproduced in its entirety.*

Jason Woodcock, Project Manager



**ANALYTICAL REPORT**

**Apex Laboratories, LLC**

6700 S.W. Sandburg Street  
Tigard, OR 97223  
503-718-2323  
ORELAP ID: OR100062

<b><u>PBS Engineering and Environmental (Eugene)</u></b> 3500 Chad Dr. Suite 100 Eugene, OR 97408	Project: <b><u>Twin Rivers Charter School</u></b> Project Number: <b>52816.000</b> Project Manager: <b>Kennedy Potts</b>	<b>Report ID:</b> <b>A4D1230 - 04 25 24 1521</b>
---	--	---

**REPORTING NOTES AND CONVENTIONS:**

**Abbreviations:**

- DET Analyte DETECTED at or above the detection or reporting limit.
- ND Analyte NOT DETECTED at or above the detection or reporting limit.
- NR Result Not Reported.
- RPD Relative Percent Difference. RPDs for Matrix Spikes and Matrix Spike Duplicates are based on concentration, not recovery.

**Detection Limits: Limit of Detection (LOD)**

Limits of Detection (LODs) are normally set at a level of one half the validated Limit of Quantitation (LOQ).  
If no value is listed ('-----'), then the data has not been evaluated below the Reporting Limit.

**Reporting Limits: Limit of Quantitation (LOQ)**

Validated Limits of Quantitation (LOQs) are reported as the Reporting Limits for all analyses where the LOQ, MRL, PQL or CRL are requested. The LOQ represents a level at or above the low point of the calibration curve, that has been validated according to Apex Laboratories' comprehensive LOQ policies and procedures.

**Reporting Conventions:**

- Basis: Results for soil samples are generally reported on a 100% dry weight basis.  
The Result Basis is listed following the units as "dry", "wet", or "" (blank) designation.
  - "dry" Sample results and Reporting Limits are reported on a dry weight basis. (i.e. "ug/kg dry")  
See Percent Solids section for details of dry weight analysis.
  - "wet" Sample results and Reporting Limits for this analysis are normally dry weight corrected, but have not been modified in this case.
  - "" Results without 'wet' or 'dry' designation are not normally dry weight corrected. These results are considered 'As Received'.

**QC Source:**

In cases where there is insufficient sample provided for Sample Duplicates and/or Matrix Spikes, a Lab Control Sample Duplicate (LCS Dup) may be analyzed to demonstrate accuracy and precision of the extraction batch.

Non-Client Batch QC Samples (Duplicates and Matrix Spike/Duplicates) are not included in this report. Please request a Full QC report if this data is required.

**Miscellaneous Notes:**

- " --- " QC results are not applicable. For example, % Recoveries for Blanks and Duplicates, % RPD for Blanks, Blank Spikes and Matrix Spikes, etc.
- " \*\*\* " Used to indicate a possible discrepancy with the Sample and Sample Duplicate results when the %RPD is not available. In this case, either the Sample or the Sample Duplicate has a reportable result for this analyte, while the other is Non Detect (ND).

**Blanks:**

Standard practice is to evaluate the results from Blank QC Samples down to a level equal to 1/2 the Reporting Limit (RL).  
-For Blank hits falling between 1/2 the RL and the RL (J flagged hits), the associated sample and QC data will receive a 'B-02' qualifier.  
-For Blank hits above the RL, the associated sample and QC data will receive a 'B' qualifier, per Apex Laboratories' Blank Policy.  
For further details, please request a copy of this document.

Apex Laboratories

*The results in this report apply to the samples analyzed in accordance with the chain of custody document(s) and updated by any subsequent written communications. This analytical report must be reproduced in its entirety.*



ANALYTICAL REPORT

**Apex Laboratories, LLC**

6700 S.W. Sandburg Street  
Tigard, OR 97223  
503-718-2323  
ORELAP ID: OR100062

<b><u>PBS Engineering and Environmental (Eugene)</u></b> 3500 Chad Dr. Suite 100 Eugene, OR 97408	Project: <b><u>Twin Rivers Charter School</u></b> Project Number: <b>52816.000</b> Project Manager: <b>Kennedy Potts</b>	<b>Report ID:</b> <b>A4D1230 - 04 25 24 1521</b>
---	--	---

**REPORTING NOTES AND CONVENTIONS (Cont.):**

**Blanks (Cont.):**

Sample results flagged with a 'B' or 'B-02' qualifier are potentially biased high if the sample results are less than ten times the level found in the blank for inorganic analyses, or less than five times the level found in the blank for organic analyses.

'B' and 'B-02' qualifications are only applied to sample results detected above the Reporting Level.

**Preparation Notes:**

Mixed Matrix Samples:

Water Samples:

Water samples containing significant amounts of sediment are decanted or separated prior to extraction, and only the water portion analyzed, unless otherwise directed by the client.

Soil and Sediment Samples:

Soil and Sediment samples containing significant amounts of water are decanted prior to extraction, and only the solid portion analyzed, unless otherwise directed by the client.

**Sampling and Preservation Notes:**

Certain regulatory programs, such as National Pollutant Discharge Elimination System (NPDES), require that activities such as sample filtration (for dissolved metals, orthophosphate, hexavalent chromium, etc.) and testing of short hold analytes (pH, Dissolved Oxygen, etc.) be performed in the field (on-site) within a short time window. In addition, sample matrix spikes are required for some analyses, and sufficient volume must be provided, and billable site specific QC requested, if this is required. All regulatory permits should be reviewed to ensure that these requirements are being met.

Data users should be aware of which regulations pertain to the samples they submit for testing. If related sample collection activities are not approved for a particular regulatory program, results should be considered estimates. Apex Laboratories will qualify these analytes according to the most stringent requirements, however results for samples that are for non-regulatory purposes may be acceptable.

Samples that have been filtered and preserved at Apex Laboratories per client request are listed in the preparation section of the report with the date and time of filtration listed.

Apex Laboratories maintains detailed records on sample receipt, including client label verification, cooler temperature, sample preservation, hold time compliance and field filtration. Data is qualified as necessary, and the lack of qualification indicates compliance with required parameters.

Apex Laboratories

*The results in this report apply to the samples analyzed in accordance with the chain of custody document(s) and updated by any subsequent written communications. This analytical report must be reproduced in its entirety.*

Jason Woodcock, Project Manager



ANALYTICAL REPORT

Apex Laboratories, LLC
6700 S.W. Sandburg Street
Tigard, OR 97223
503-718-2323
ORELAP ID: OR100062

Table with 3 columns: Client (PBS Engineering and Environmental (Eugene)), Project (Twin Rivers Charter School), and Report ID (A4D1230 - 04 25 24 1521).

LABORATORY ACCREDITATION INFORMATION

ORELAP Certification ID: OR100062 (Primary Accreditation)
EPA ID: OR01039

All methods and analytes reported from work performed at Apex Laboratories are included on Apex Laboratories' ORELAP Scope of Certification, with the exception of any analyte(s) listed below:

Apex Laboratories

Table with 6 columns: Matrix, Analysis, TNI\_ID, Analyte, TNI\_ID, Accreditation

All reported analytes are included in Apex Laboratories' current ORELAP scope.

Secondary Accreditations

Apex Laboratories also maintains reciprocal accreditation with non-TNI states (Washington DOE), as well as other state specific accreditations not listed here.

Subcontract Laboratory Accreditations

Subcontracted data falls outside of Apex Laboratories' Scope of Accreditation. Please see the Subcontract Laboratory report for full details, or contact your Project Manager for more information.

Field Testing Parameters

Results for Field Tested data are provided by the client or sampler, and fall outside of Apex Laboratories' Scope of Accreditation.

Apex Laboratories

Handwritten signature of Jason Woodcock

The results in this report apply to the samples analyzed in accordance with the chain of custody document(s) and updated by any subsequent written communications. This analytical report must be reproduced in its entirety.

Jason Woodcock, Project Manager





ANALYTICAL REPORT

**Apex Laboratories, LLC**

6700 S.W. Sandburg Street  
Tigard, OR 97223  
503-718-2323  
ORELAP ID: OR100062

<b>PBS Engineering and Environmental (Eugene)</b> 3500 Chad Dr. Suite 100 Eugene, OR 97408	Project: <b><u>Twin Rivers Charter School</u></b> Project Number: <b>52816.000</b> Project Manager: <b>Kennedy Potts</b>	Report ID: <b>A4D1230 - 04 25 24 1521</b>
--	--	--

11/16/15

Lead Drinking Water  
Northwest Youth Corps PBS Project No.: 52816.000

	Time	Sample Number	Room / Location	Fixture Type	Notes
21	7:28	20823000-015BF24A	Main Hall Men's Restroom	BF	
22	7:28	20823000-016BF24A	Main Hall Men's Restroom	BF	
23	7:31	20823000-021SF24A	Conference Room	SF	
24	7:32	20823000-023SF24A	Food Room	SF	
25	7:35	20823000-022SF24A	Shop	SF	
26	7:37	20823000-024OT24A	South Exterior	OT	
27	7:37	20823000-026OT24A	South Exterior	OT	
28	7:41	20823000-032OT24A	Exterior West of Main Hall Women's Restroom	OT	
29	7:45	20823000-007OT24A	Classroom Wing South Exterior	OT	
30					
31					
32					
33					
34					
35					
36					
37					
38					
39					
40					
41					
42					
43					
44					
45					
46					
47					
48					
49					
50					
51					
52					

**PBS** 2 of \_\_\_

Apex Laboratories

*The results in this report apply to the samples analyzed in accordance with the chain of custody document(s) and updated by any subsequent written communications. This analytical report must be reproduced in its entirety.*

Jason Woodcock, Project Manager



ANALYTICAL REPORT

**Apex Laboratories, LLC**

6700 S.W. Sandburg Street  
Tigard, OR 97223  
503-718-2323  
ORELAP ID: OR100062

<b>PBS Engineering and Environmental (Eugene)</b> 3500 Chad Dr. Suite 100 Eugene, OR 97408	Project: <b>Twin Rivers Charter School</b> Project Number: <b>52816.000</b> Project Manager: <b>Kennedy Potts</b>	Report ID: <b>A4D1230 - 04 25 24 1521</b>
--	---	--

**APEX LABS COOLER RECEIPT FORM**

**Client:** PBS Element WO#: A4 D1230

**Project/Project #:** Twin Rivers Charter School 52816.000  
*PKG for PBS 4/15/14*

**Delivery Info:**  
Date/time received: 4/15/14 @ 1018 By: KPS  
Delivered by: Apex  Client  ESS  FedEx  UPS  Radio  Morgan  SDS  Evergreen  Other   
From USDA Regulated Origin? Yes  No

**Cooler Inspection** Date/time inspected: 4/15/14 @ 1018 By: KPS  
Chain of Custody included? Yes  No   
Signed/dated by client? Yes  No   
Contains USDA Reg. Soils? Yes  No  Unsure (email RegSoils)

	Cooler #1	Cooler #2	Cooler #3	Cooler #4	Cooler #5	Cooler #6	Cooler #7
Temperature (°C)	<u>17.3</u>						
Custody seals? (Y/N)	<u>N</u>						
Received on ice? (Y/N)	<u>N</u>						
Temp. blanks? (Y/N)	<u>N</u>						
Ice type: (Gel/Real/Other)	<u>None</u>						
Condition (In/Out):	<u>out</u>						

Cooler out of temp?  (Y/N) Possible reason why: Drinking water  
Green dots applied to out of temperature samples? Yes  No   
Out of temperature samples form initiated? Yes  No

**Sample Inspection:** Date/time inspected: 4/15/14 @ 1250 By: ms  
All samples intact? Yes  No  Comments: \_\_\_\_\_  
Bottle labels/COCs agree? Yes  No  Comments: \_\_\_\_\_  
COC/container discrepancies form initiated? Yes  No   
Containers/volumes received appropriate for analysis? Yes  No  Comments: \_\_\_\_\_  
Do VOA vials have visible headspace? Yes  No  NA   
Comments: \_\_\_\_\_  
Water samples: pH checked: Yes  No  NA  pH appropriate? Yes  No  NA  pH ID: A23I172  
Comments: 7259 0290 7346

Labeled by: ls Witness: [Signature] Cooler Inspected by: ls

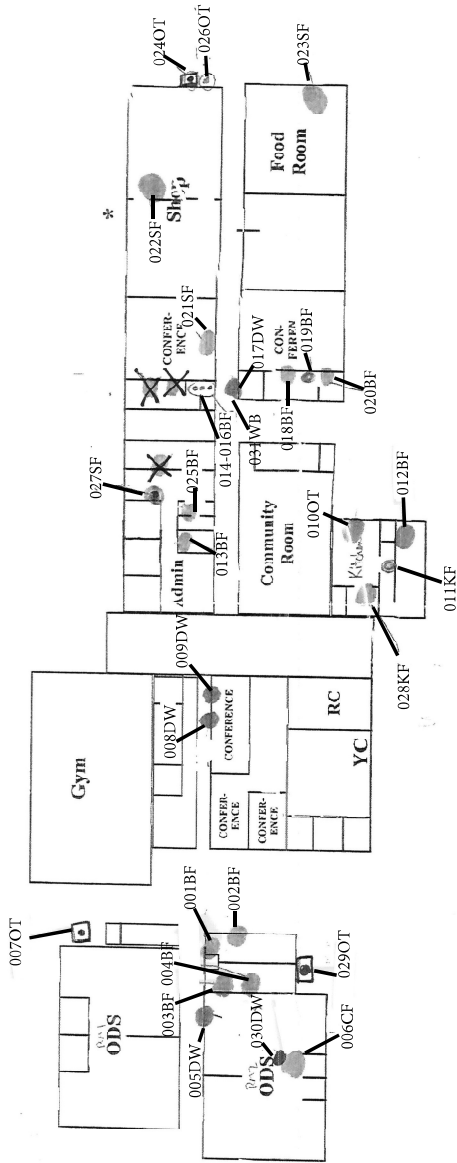
Form Y-003 R-02

Apex Laboratories

Jason Woodcock, Project Manager

*The results in this report apply to the samples analyzed in accordance with the chain of custody document(s) and updated by any subsequent written communications. This analytical report must be reproduced in its entirety.*

# Northwest Youth Corps Water Sources



E  
N ← S  
W

■ - ~~18~~ 21 Faucets

■ - ~~15~~ drinking fountains

□ - ~~15~~ Hose Bibs

Building Identification Number: 20823000